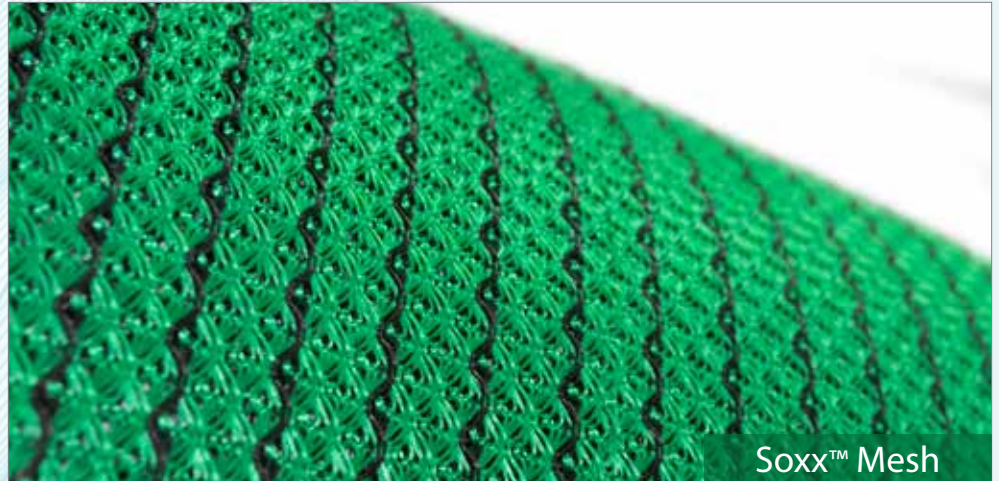


# Filtrex<sup>®</sup> Products

The industry leader in sustainable erosion & sediment control and low impact development applications



## Filtrex Advantages

- **Value.** Complete projects on time and within budget with Filtrex products.<sup>1,2</sup>
- **Compliance.** Nationwide compliance sets you on a clear path to reach your goals.
- **Performance.** Proven to outperform conventional, unsustainable products.<sup>3</sup>
- **Research.** Third-party tested products bring the results you want to your project.<sup>3</sup>
- **Sustainability.** Lower your carbon footprint with the most effective BMPs that Mimic Nature<sup>®</sup> by using annually renewable, locally recycled, organic materials.<sup>3,4</sup>

SiltSoxx<sup>™</sup> are in compliance with most state & federal agencies including:



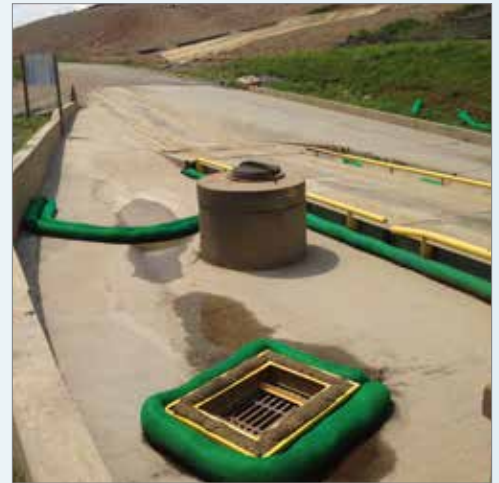
## Erosion & Sediment Control



## Installation Services



## Targeted Pollutant Removal



Products: SiltSoxx™ and DrainChexx® †

### Applications:

- Perimeter Control
- Inlet Protection†
- Check Dams
- Concrete Washout
- Slope Interruption
- Runoff Diversion\*
- Sediment Trap

Available in select areas of OH, PA, and WV

### Services:

- SiltSoxx™ Installation
- Compost Blankets
- Hydroseeding
- Straw & Mulch

Products: EnviroSoxx® and StormExx®

### Applications:

- Inlets
- Biofiltration
- Contaminated area wraps
- Catch Basin Filters
- Trash Full Capture Devices

### Targeted Pollutants:

- Heavy Metals
- Hydrocarbons
- Bacteria
- Nutrients

## Stormwater Management



## Bank & Slope Stabilization



## Living Shorelines



Product: GroSoxx®

### Applications:

- Filtration System
- Channel Protection
- Rain Garden/Bioretention System
- Bioswale
- Gabions
- Green Roofs

Product: GroSoxx®

### Systems:

- GreenLoxx® MSE
- GreenLoxx® Non-MSE

### Applications:

- Rivers
- Streams
- Creeks
- Ponds

Product: GroSoxx®

### Applications:

- Edge Protection (pond, river, creek, stream)
- Stream Restoration
- Revetment
- Dune Regeneration & Scarp Protection

System: GreenLoxx® Non-MSE

## Filtrexx Environmental Sustainability Benefits

Filtrexx SiltSoxx™ uses **locally recycled organic materials** inside of photodegradable or biodegradable mesh. Diverting these organic materials from landfills and applying them to the soil means a reduction in greenhouse gas emissions. **For every 1,000' of 8" SiltSoxx used, 33,000 lbs of organic materials are diverted and your carbon footprint is reduced by 70,000 lbs CO<sub>2</sub>e.** This is the equivalent of offsetting the greenhouse gas emissions of **7 passenger vehicles** driven for one year.<sup>4</sup> SiltSoxx minimizes the cost of removal/disposal and keeps excessive amounts of plastic out of the landfill—at the end of your project, simply spread the organic materials on-site.<sup>5</sup>

†Inlet Protection can use SiltSoxx or DrainChexx. DrainChexx uses aspen excelsior & recycled rubber. \*Runoff Diversion uses GrowingMedia. Sources: †Filtrexx TechLink #3335. †Dispose of materials per site plans. USDA Biobased 100% applies to SiltSoxx, GroSoxx, GardenSoxx. StormExx is made in USA of U.S. and imported parts. Regulatory compliance may depend on individual federal/state regulations. Filtrexx, Mimic Nature, the Branch & Leaf logo, DrainChexx, GroSoxx, GreenLoxx, StormExx, & EnviroSoxx are Registered Trademarks of Filtrexx International. FilterMedia, GrowingMedia, SiltSoxx, and Soxx are Trademarks of Filtrexx International. US Patents 7,226,240; 7,452,165; 7,479,221; 7,588,689; 7,654,292; 8,272,812; 8,439,607; 8,740,503; 8,821,076; and 9,044,795 may apply & patents pending. © 2018 Filtrexx International, all rights reserved. Printed October 2018.