

**SOLUTIONS TO
SAFEGUARD
ANY SITE
AND BUDGET.**

CONSTRUCTION APPLICATIONS

SEDIMENT CONTROL



FILTREXX SILTSOXX®

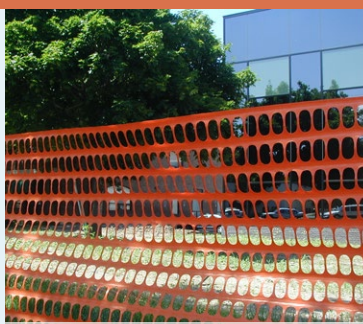


MESH NETTING

CONSTRUCTION SITE BARRIERS



TRAFFIC MARKER™



SAFETY FENCE

POST-CONSTRUCTION APPLICATIONS

STORMWATER MANAGEMENT



ENVIROSOXX®



DRAINCHEXX®

ABSORBENTS

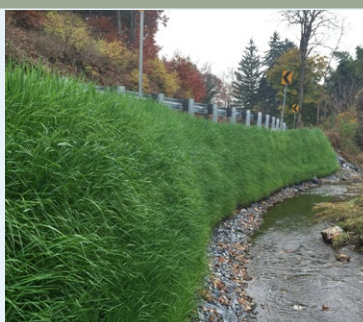


BIOLOXX™

LID & GREEN INFRASTRUCTURE



GROSOXX®



GREENLOXX®

- PROMOTES GROWTH
- ALL NATURAL OPTIONS
- HIGH VISIBILITY
- FILTERS SEDIMENT
- FILTERS POLLUTANTS

Filtrex SiltSoxx[®]

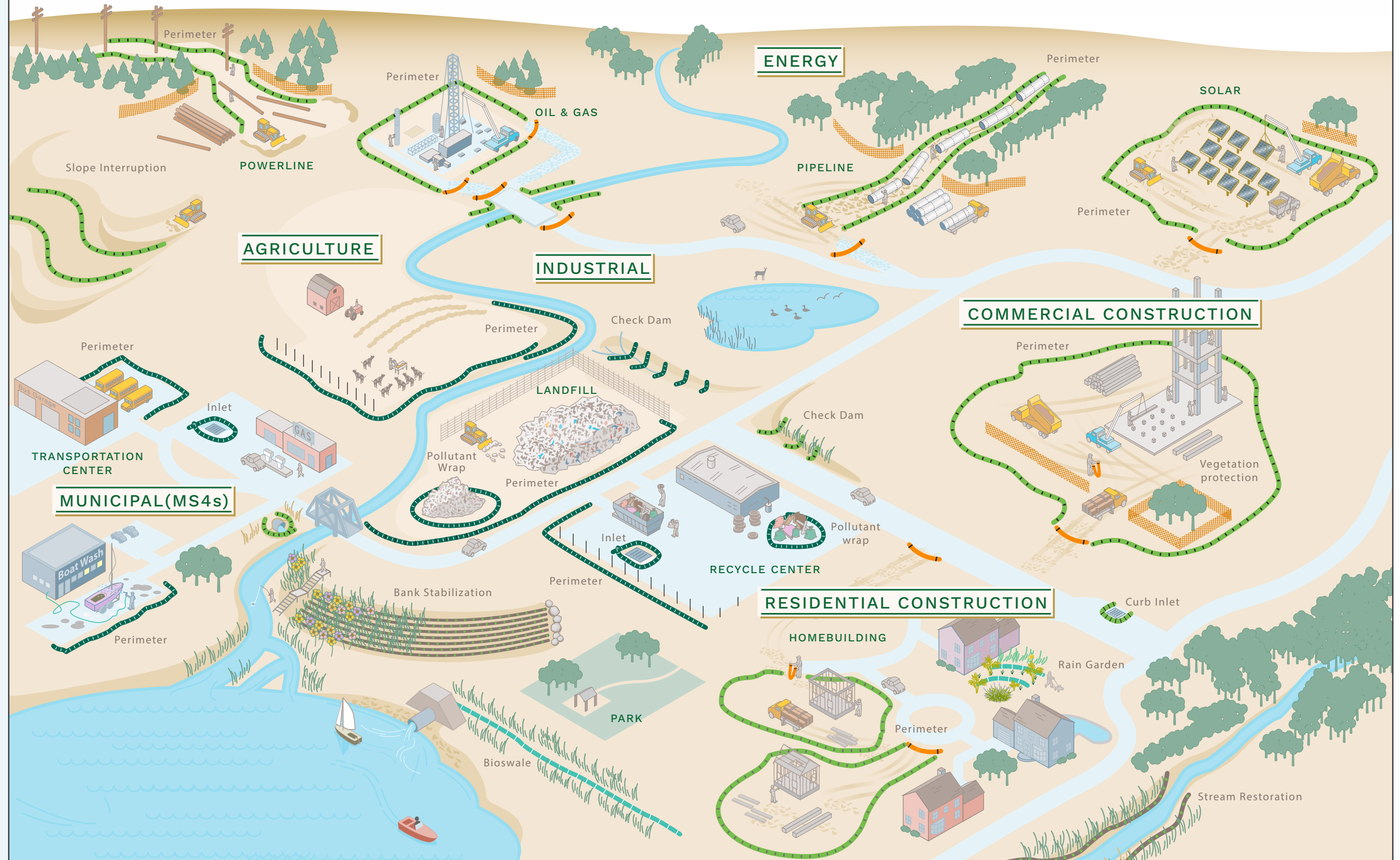
EnviroSoxx[®]

GreenLoxx[®]

GroSoxx[®]

Traffic Marker[™]

Safety Fence



ABOUT FILTREXX

Filtrexx is the leader in Sustainable BMPs for use in erosion and sediment control, stormwater management, pollutant removal, and low impact development to protect our soil, water and environment.

After years of continual research and development, Filtrexx technology includes a variety of products for construction and post-construction applications. Our sustainable solutions, built around our proprietary Filtrexx SiltSoxx technology, are used in diverse applications such as erosion & sediment control, construction site barriers, stormwater management, pollutant removal, low impact development, green infrastructure, and living walls.

Filtrexx collaborates closely with our customers to identify the most appropriate technology for each specific application. Filtrexx has an extensive network of partners and distributors to serve customers across the globe.

Contact us to find a distributor or inquire about joining our distribution network.

INDUSTRIES SERVED

- Commercial Construction & Demolition
- Homebuilding
- Oil & Gas
- Pipelines
- Power & Utility
- Solar & Wind
- Municipalities
- DOT Highway & Road
- Environmental Remediation
- Industrial
- Agriculture

SUSTAINABLE & MADE IN USA

Filtrexx products use locally recycled organic materials inside of photodegradable or biodegradable mesh. Diverting these organic materials from landfills and applying them to the soil means a reduction in greenhouse gas emissions, and a lower carbon footprint for your project or site.

All Filtrexx mesh materials are manufactured in the USA. Numerous facilities around the country fill the mesh materials with local compost FilterMedia in order to reduce freight costs & emissions.

Visit filtrexx.com for product resources:

- Submittal Forms
- Installation Specs
- Design Specs & CADs



GROUNDING IN SCIENCE. FILLED WITH POSSIBILITIES.



filtrexx®
SUSTAINABLE TECHNOLOGIES



www.filtrex.com | 877-542-7699 | info@filtrex.com

USDA Biobased 100% applies to SiltSoxx™ and GroSoxx®. Filtrex®, Filtrex SiltSoxx®, DrainChexx®, EnviroSoxx®, GroSoxx®, GreenLoxx®, the branch & leaf logo® and the color GREEN® are Registered Trademarks used by Filtrex International. Traffic Marker™ and BioLoxx™ are Trademarks used by Filtrex International. US Patents 7,226,240; 7,452,165; 7,654,292; 8,272,812; 8,439,607; 8,740,503; 8,821,076; 9,044,795; 9,945,090; and 9,982,409 may apply & patents pending. © 2021 Filtrex International, all rights reserved. Printed April 2021.