

ENVIROSOXX[®] POLLUTANT FILTER



**STOPS POLLUTANTS FROM
LEAVING YOUR SITE.**

REMOVAL RATES:

(UP TO)

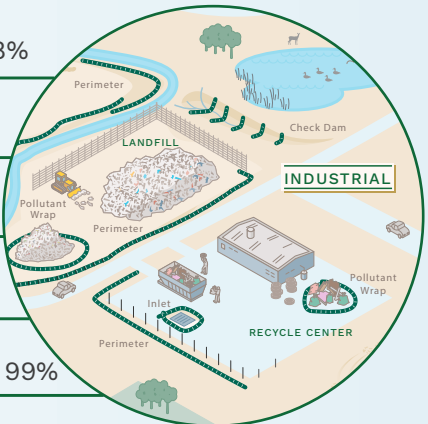
▶ TOTAL SOLIDS: 98%

▶ METALS: 73%

▶ NUTRIENTS: 92%

▶ BACTERIA: 99%

▶ HYDROCARBONS: 99%



ENVIROSOXX® POLLUTANT FILTER



EnviroSoxx by Filtrex is the most versatile and cost effective filter for stormwater pollutant removal.

A passive filtration system ready to install on any site, EnviroSoxx targets the most common pollutants in stormwater runoff.



FILTERS SEDIMENT



FILTERS POLLUTANTS

APPLICATIONS

- Inlets & Outfalls
- Ditches & Swales
- Biofiltration
- Perimeters & Wraps

ADVANTAGES

- Reduces pollutant loads
- Fits existing infrastructure
- Easy to maintain & replace
- Third-party researched
- **EXTREME** durable mesh stands up to hard surfaces and harsh site conditions

FOR STORMWATER TREATMENT

EnviroSoxx is available in two filter blends to target common pollutants.

ENVIROSOXX ADVANCED BLEND FILTER		
Pollutant Group	Pollutant	Removal Rates ¹
Heavy Metals	Cadmium	73%
	Diesel	99%
Hydrocarbons	Motor Oil	99%
	Gasoline	54%
Nutrients	Soluble Phosphorus	93%
	Ammonium Nitrogen (NH4-N)	54%
Bacteria	E. coli	99%
	Total coliforms	99%
General	Total solids	98%
	TSS	80%
	Turbidity	63%

ENVIROSOXX INDUSTRIAL BLEND FILTER		
Pollutant Group	Pollutant	Removal Rates ¹
Heavy Metals	Cadmium	73%
	Lead	73%
	Copper	70%
	Nickel	69%
	Zinc	53%
	Chromium	47%
Hydrocarbons	Diesel	99%
	Motor Oil	99%
	Gasoline	54%
Nutrients	Soluble Phosphorus	93%
	Ammonium Nitrogen (NH4-N)	54%
General	Total Solids	98%
	TSS	80%
	Turbidity	63%

¹Removal rates vary by pollutant and are based on third-party research, actual removal rates may vary and are highly dependent on site specific environmental conditions including flow rate, flow volume, pollutant concentration, pollutant load, proper installation, maintenance, and design. See Research References on reverse¹.

COMMON USES

- Agriculture
- Brownfields
- Bulk storage
- CAFO's
- Compost facilities
- Drilling/fracking sites
- Fueling stations
- Golf courses
- Heavy industry
- Industrial sites
- Landfills/transfer stations
- Marinas & boat washes
- Nurseries
- Parking lots/roadsides
- Pet parks
- Recycling yards
- Rooftops
- Sewers & septic
- Vehicle wash stations
- Wetland overflows

ENVIROSOXX® POLLUTANT FILTER

EnviroSoxx by Filtrexx is available through distributors nationwide.

Contact us to find a distributor or inquire about joining our distribution network.

EnviroSoxx Diameter	Pieces / Length (per pallet)
8"	8 / 10' ea (half pallet)
	16 / 10' ea (full pallet)
	2 / 80' ea (full pallet)
12"	5 / 10' ea (half pallet)
	10 / 10' ea (full pallet)
	1 / 100' (full pallet)

EnviroSoxx are available on pallets in pre-cut sections or continuous lengths for easy delivery and installation.

†RESEARCH REFERENCES

Faucette, B., F. Cardoso, W. Mulbry, P. Millner. 2013. Performance of compost filtration practice for green infrastructure stormwater applications. *Water Environment Research*. 85:9: 806-814.

Faucette, B., F. Cardoso-Gendreau, E. Codling, A. Sadeghi, Y. Pachepsky, D. Shelton. 2009. Storm water pollutant removal performance of compost filter socks. *Journal of Environmental Quality*. 38:1233-1239.

Faucette, L. B., K. A. Sefton, A. M. Sadeghi, R. A. Rowland. 2008. Sediment and phosphorus removal from simulated storm runoff with compost filter socks and silt fence. *Journal of Soil and Water Conservation*. 63:4:257-264.

Filtrexx TechLinks #3325 and #3328.



filtrexx.com | 877-542-7699 | info@filtrexx.com