

INSTALLATION SERVICES



Filtrex Installation Services are available in the **Northeast Region**, and now expanding into the **Southeast Region** – call for availability.



INDUSTRIES SERVED

- Oil & Gas
- Pipeline
- Powerline & Utility
- Roadway
- Solar & Wind
- Homebuilding
- Municipalities
- Remediation
- Commercial Construction

Filtrex SiltSoxx® are in compliance with most state and federal agencies including USEPA, AASHTO, USDA NRCS and US ACE.



filtrex.com | 877-542-7699 | info@filtrex.com

Regulatory compliance may depend on individual federal/state regulations. Filtrex®, Filtrex SiltSoxx®, the branch & leaf logo® and the color GREEN® are Registered Trademarks of Filtrex International. US Patents 7,226,240; 7,452,165; 7,654,292; 8,272,812; 8,439,607; 8,740,503; 8,821,076; 9,044,795; 9,945,090; and 9,982,409 may apply & patents pending. © 2021 Filtrex International, all rights reserved. Printed July 2021.



FIELD & SITE SOLUTIONS FOR THE ENERGY INDUSTRY

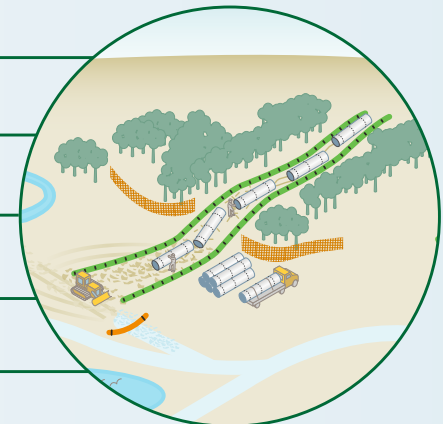
▶ PIPELINE

▶ OIL & GAS

▶ SOLAR

▶ ROADWAY

▶ UTILITY





Erosion & sediment control is a necessity—that's why the largest names in energy and construction ensure they are properly protected with Filtrexx Installation Services.

EXCEPTIONAL SAFETY CULTURE

We take our employee's safety seriously, and are proud to have one of the best safety records in the industry with over 20 years in operation. Training & compliance include:

- ISNetworld Compliant
- OSHA 10
- SafeLand USA
- Veriforce Compliant
- First Aid & CPR

EXTENSIVE CAPABILITIES

Our localized crews, large fleet, and custom equipment ensure efficient, effective installation.

ENERGY INDUSTRY EXPERTISE

Our services are trusted by some of the biggest names in the industry. From construction of some of the largest PA Turnpike projects, to Marcellus oil & gas contracts and the rapidly expanding solar industry, Filtrexx Installation Services is a clear leader in the Northeast and beyond.

PROJECT VERSATILITY

Our solutions and equipment are ready to stabilize virtually any terrain. Our track machines are designed to navigate snow, mud, steep slopes and other nasty terrain, all while saving you money and keeping your project on schedule.



FILTREXX INSTALLATION SERVICES

Sediment Control BMPs

- Filtrexx SiltSoxx® compost filter sock (perimeter, inlet, slope, sediment trap) – track machine and blower truck capabilities
- Sediment control barriers and fencing
- Construction safety fence
- Any BMP specified on your SWPPP
- Erosion & sediment control device removal

Seed & Mulch - Temporary & Permanent

- Hydroseeding
- Flex-Terra FGM
- Conventional seed/mulch
- Raking/rock hound

Erosion Control Blankets & Compost Blankets

- Rolled Erosion Control Matting (RECM or RECP)
- Lockdown Netting + Compost Blanket
- Straw, coconut or combination
- Temporary or permanent Turf Reinforcement Matting (TRM)

Restoration & Remediation

- Pipeline restoration
- Native plantings
- GreenLoxx® MSE Vegetated Retaining Walls
- GreenLoxx® VSF Vegetated Slope Facing
- Rain garden/wet pond
- Streambanks & shorelines

Other Services

- Timber & bridge mat setting
- Sweeper truck
- Snow removal
- Rock construction entrance
- Farm fencing