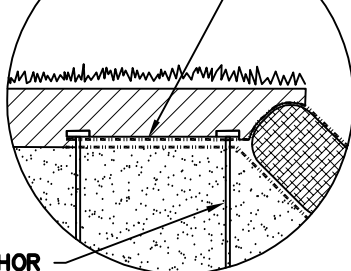


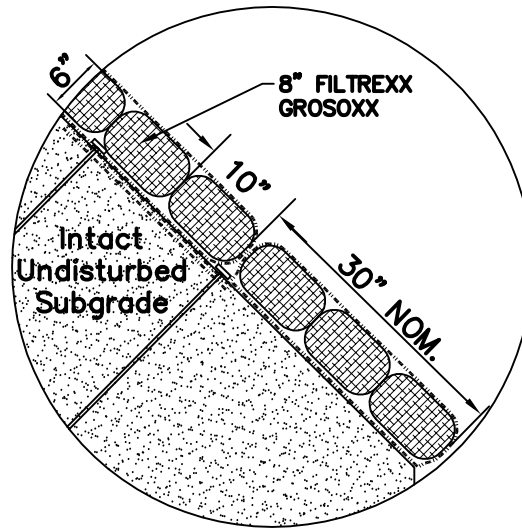
FLW 35 GEOGRID OR APPROVED GRID BY ENGINEER TO LINE SLOPE FACE & WRAP AROUND GROSOXX IN ONE CONTINUOUS PIECE, ANCHORING BETWEEN GROSOXX EVERY 30" MAX.

*NO GEOGRID STRANDS ARE ALLOWED TO BE CUT IN ORDER TO INSERT PLANTS IN ANY CASE.

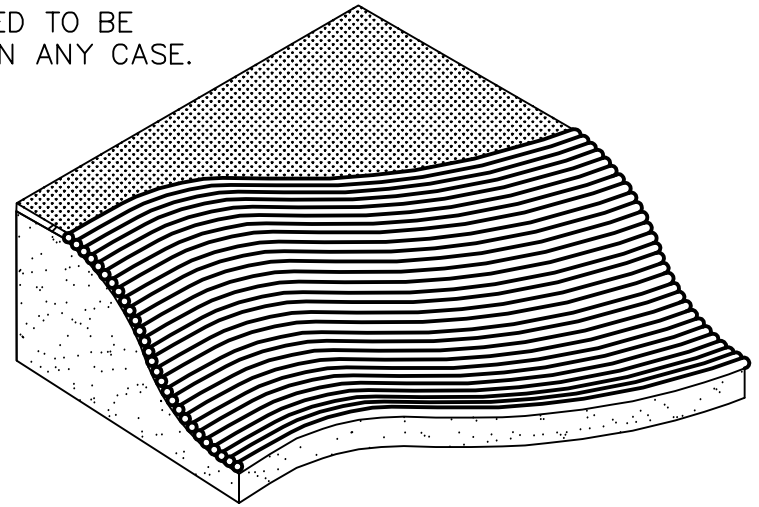


DETAIL A

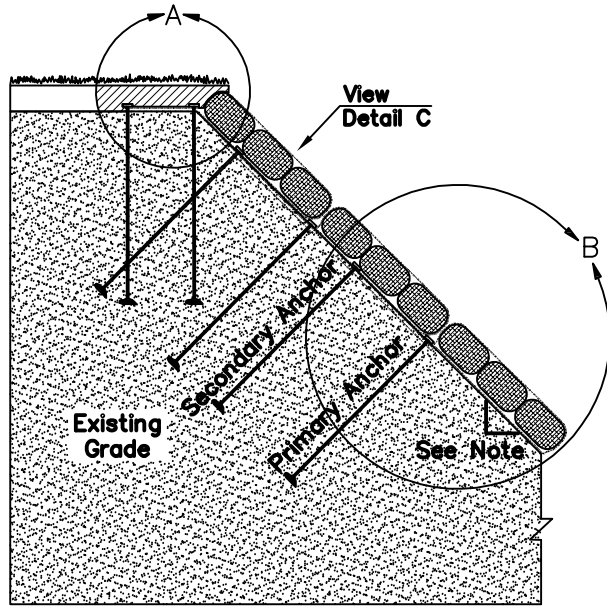
GRIPPLE SOIL ANCHOR (DEPTH AND ANCHOR STRENGTH TO BE BASED ON ON-SITE SOIL CONDITIONS DETERMINED BY ENGINEER)



DETAIL B

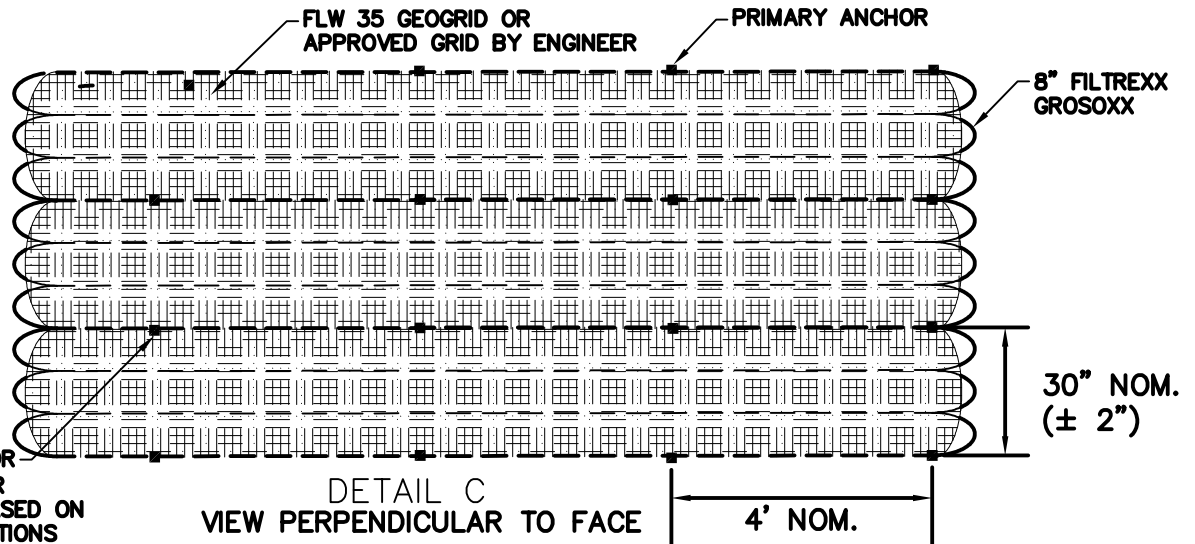


NOTE: THIS APPLICATION IS FOR SURFICIAL STABILITY ONLY (GEOTECHNICAL ENGINEER SHOULD EVALUATE DEEP SEATED SLOPE STABILITY SEPARATELY)



TYPICAL SECTION
NOT TO SCALE

GRIPPLE SOIL ANCHOR (DEPTH AND ANCHOR STRENGTH TO BE BASED ON ON-SITE SOIL CONDITIONS DETERMINED BY ENGINEER)



DETAIL C
VIEW PERPENDICULAR TO FACE



These graphic representations are intended for preliminary design purposes only and are not to be used for construction without the signature of a registered professional engineer.

SCALE:
NONE

**GREENLOXX VEGETATED SLOPE
FACING DETAIL (STYLE 2)**