

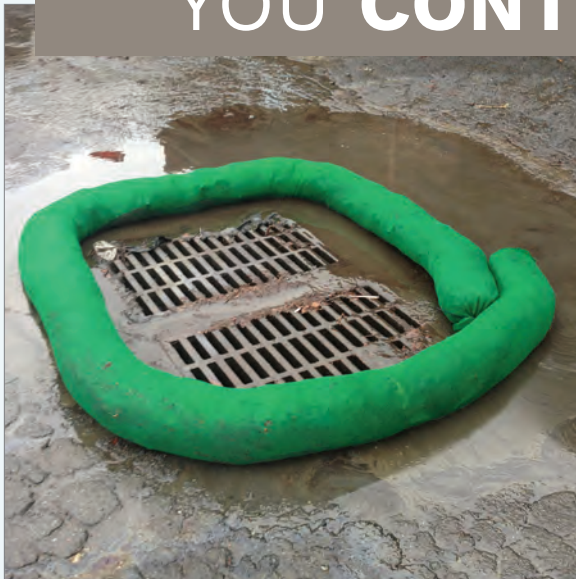


SILTSOXX™

COMPOST FILTER SOCK



**CONTROLS COSTS WHILE
YOU CONTROL RUNOFF.**



SiltSoxx by Filtrex is the quickest, easiest and most cost effective solution for sediment control.

Easily installed for a variety of construction applications, SiltSoxx reduces the labor cost required for installation and maintenance, while delivering optimal performance.

BMP COMPARISON: TOTAL SOLIDS (TS) REMOVAL EFFICIENCY

| Sediment Control Device | Product Size | Removal Efficiency* |
|-----------------------------------|--------------|---------------------|
| Filtrexx SiltSoxx ¹ | 12 in | 97% |
| Filtrexx SiltSoxx ¹ | 8 in | 82% |
| Silt fence ² | 24 in | 72% |
| Straw wattle ¹ | 20 in | 70% |
| Tire-chip wattle ¹ | 9.5 in | 69% |
| Off-spec filter sock ¹ | 12 in | 66% |
| Rock/gravel bag ³ | N/A | 16% |



The performance difference between compost filter socks that adhere to federal and state specifications for mesh and media versus those that do not meet these specifications is quite substantial. Scientific research shows that 8-inch SiltSoxx performs better than 12-inch off-spec filter sock, generating 43% less tons/acre of sediment¹, underscoring the importance of using the proper media and mesh. Filtrexx® FilterMedia™ is certified to meet the necessary flow-through rates specified by both the USEPA and most state regulators.

Sources:
¹Data from TRI-Environmental, ASTM D6459. See Filtrexx TechLink #3333. ²Silt fence data from San Diego State University, Modified ASTM D6459. See Filtrexx TechLink #3331. ³Rock/gravel bag data from Soil Control Lab, ASTM D3977-97C. See Filtrexx TechLink #3332. *Removal efficiency performance may vary under conditions different from those tested and reported here.

Failures of these BMPs require regular maintenance, extra costs and fees.



Silt fence failures such as this require regular maintenance, contributing to a much higher overall project cost.









More staking on straw wattles creates more low points, which are more likely to overtop.



Devices with low flow-through rate, such as off-spec filter sock, overtop faster due to increased ponding & hydraulic pressure behind the device.

SILTSOXX SPECS

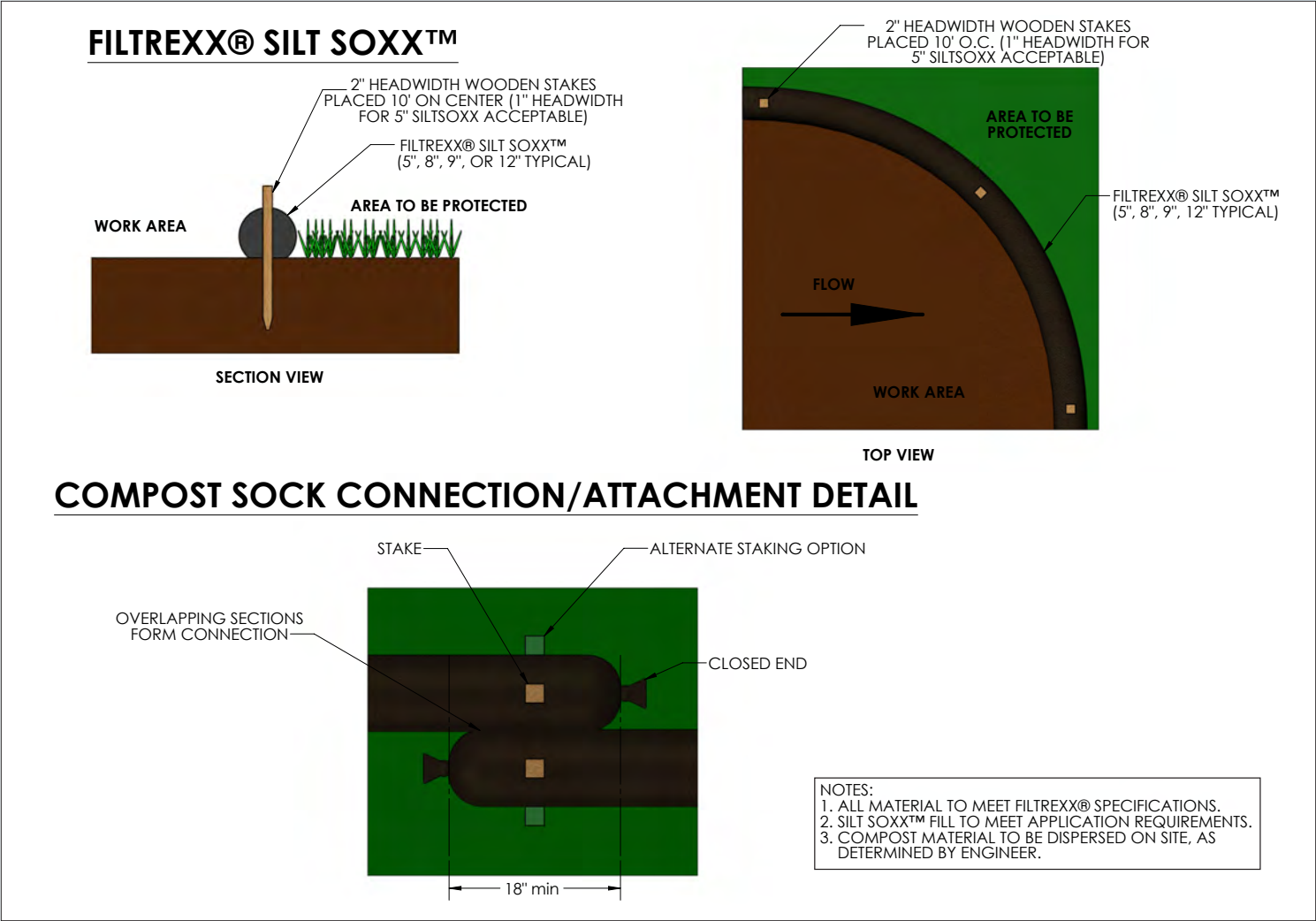
| Product Name | SiltSoxx ORIGINAL | SiltSoxx EXTREME | SiltSoxx Natural ORIGINAL | SiltSoxx Natural PLUS |
|--------------------|---|--|---|---|
| Mesh Material Type | Multi-Filament Polypropylene (MFPP) | Multi-Filament Polypropylene (MFPP) | All Natural Biodegradable Cotton Fiber | All Natural Biodegradable Wood Fiber |
| Uses | all standard applications | hard surfaces; rugged terrain; high traffic | leave on site; short-term | leave on site; long-term |
| Diameters | 5", 8", 12", 18", 24" | 8", 12" | 5", 8", 12" | 5", 8", 12" |
| Longevity* | up to 5 yr | up to 5 yr | up to 12 mo | up to 18 mo |
| Fill Material | Locally sourced FilterMedia | Locally sourced FilterMedia | Locally sourced FilterMedia | Locally sourced FilterMedia |
| Mesh Color |  green/thin black stripe  tan (5" & 8" only) |  green/black thick stripe  orange |  beige |  off-white |

*Functional longevity ranges are estimates only. Site specific environmental conditions may result in significantly shorter or longer time periods.

Available through distribution nationwide.

SILTSOXX™ DESIGN DRAWINGS

Refer to Design Specifications for complete application, design, installation, maintenance, and removal documentation at www.filtrexx.com/specs



SiltSoxx™ are in compliance with most state & federal agencies including:



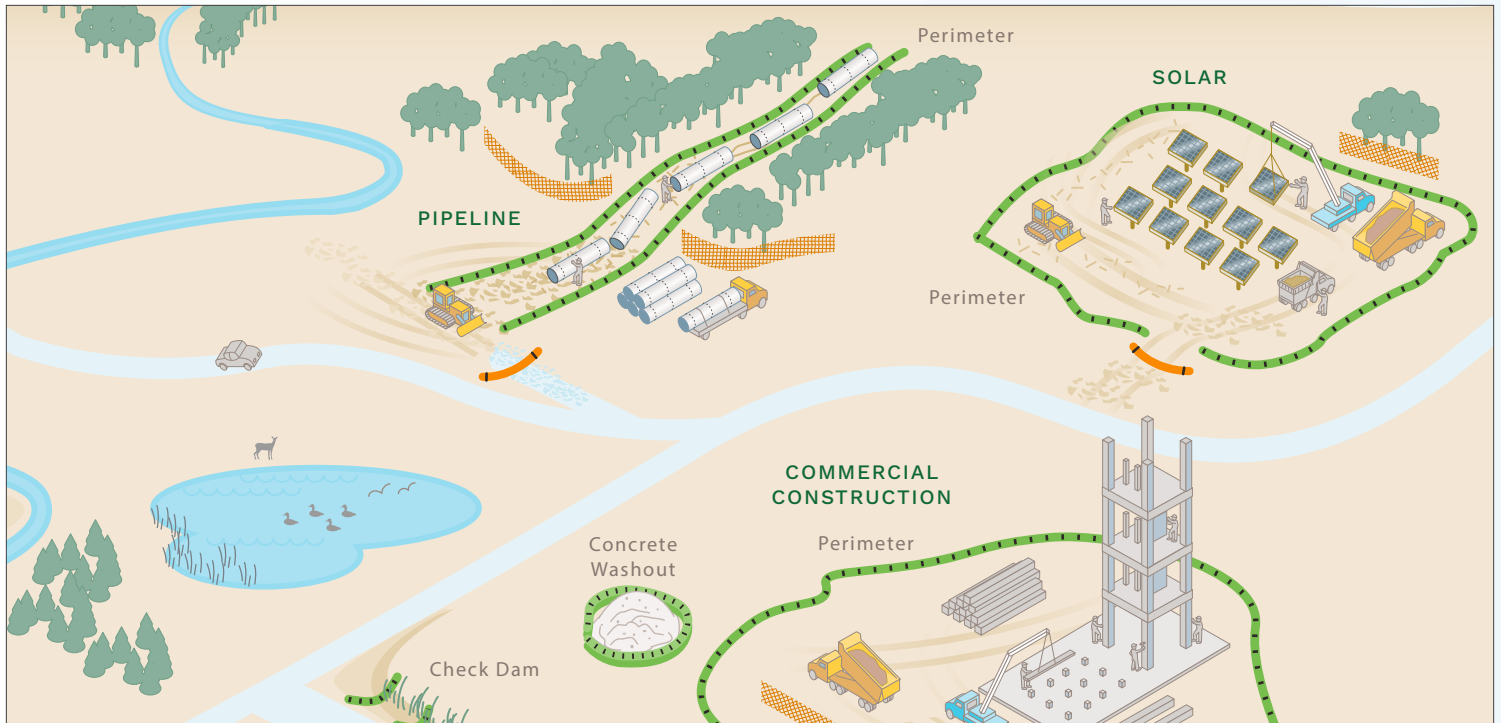
Use SiltSoxx™ for a variety of applications and industries



FILTERS SEDIMENT



ALL NATURAL OPTIONS



APPLICATIONS

- PERIMETER CONTROL
- INLET PROTECTION
- CHECK DAM
- SLOPES
- RUNOFF DIVERSION
- CONCRETE WASHOUT

INDUSTRIES

- COMMERCIAL CONSTRUCTION
- HOMEBUILDING
- OIL & GAS
- PIPELINES
- POWER & UTILITY
- SOLAR & WIND



filtrexx.com | 877-542-7699 | info@filtrexx.com