



Evolution of Filtrex Living Walls

A Closer Look at Our “GreenLoxx” Living Wall
Systems.

Our Foundation is Compost Socks

Recycling and Low Impact Development Movement



Filter Media used in SiltSoxx™



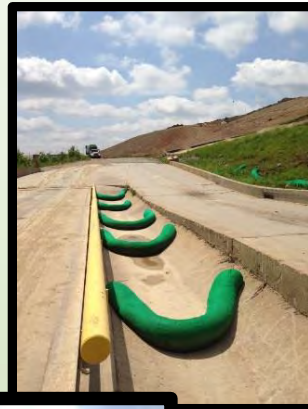
Growing Media used in GroSoxx™



Applications



SiltSoxx™
Sediment Control



EnviroSoxx™
Targeted Pollutant Removal



GroSoxx™
Living Wall Systems

Our Mission is Green-Space Return to the Built Environment

Hardscape vs. Landscape

Solid Walls have two outcomes:

- (1) Great structure for holding back the grade change
- (2) Great at contributing to Urban Heat Island



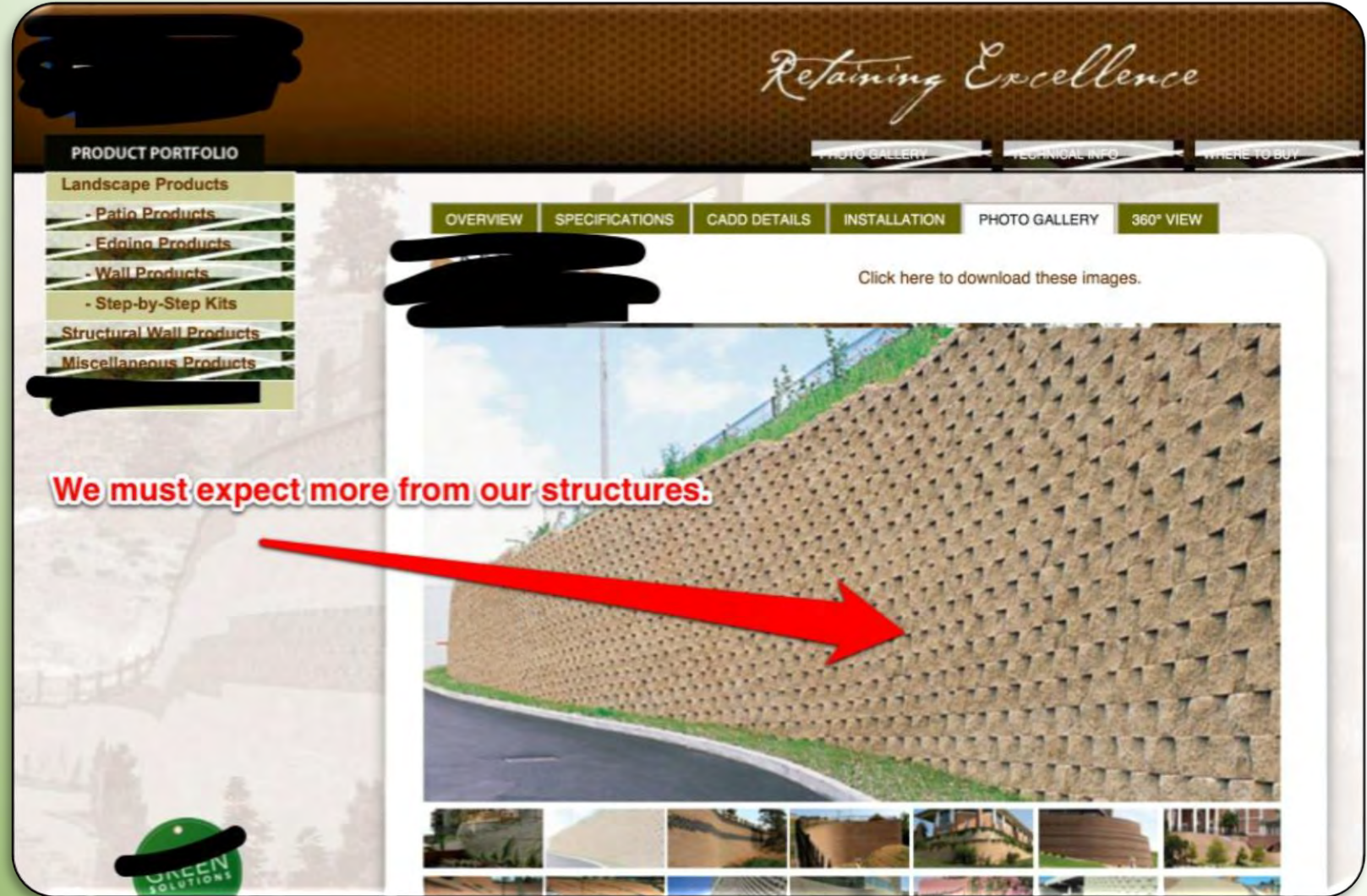
Maximum Environmental Service from Living Walls:

Great Structure for holding back the grade change
+ Green-space, Habitat, Urban Cooling, Rainwater retention and treatment

Take Advantage of the Vertical Space!

Nice shot from a competitors website and this sort of project is everywhere.

Lots of opportunity to use Living Walls as an alternate that offers so much more environmental service for a comparable price.



“Vertical Parking Lots” Should Be a Thing of the Past

Turn this wall on its side and park cars on either plane.

Great wall but not great environmental service.

Our planet needs more environmental service from typical structures!



Creating Structural Facing Systems That Support Healthy Plants **is** What We Do Across Our Entire Product Line



GroSoxx[®]
CUSTOM VEGETATED SOFT BLOCKS™

GreenLoxx[®]
LIVING WALL™ SYSTEM

Trinity[™]
LIVING WALL™ SYSTEM

EnviroBloxx[™]
LIVING WALL™ SYSTEM

EarthBloxx[™]
LIVING WALL™ SYSTEM

filtrex[®]
Living Walls™

Why Filtrex[®] LivingWalls[™]

- Committed to the entire life cycle of these plant-based building systems
- MSE and non-MSE applications
- Solutions for 90° to 25° of inclination



Why GreenLoxx Living Walls?

Structure - Living Retaining Walls provide the underlying structure needed to permanently stabilize grade changes.



Environmental Benefits - Living walls minimize stormwater runoff, cool the environment, and provide habitat for native creatures. Plant based living systems have been shown to benefit buildings, owners, occupants, and the environment.



Design Flexibility – GreenLoxx Systems can be installed where many other systems cannot. Locations such as creek banks where excavation is not possible or desired.





GroSoxx®



GroSoxx® with
Lockdown™ Netting



GreenLoxx®



The focus of
this
presentation.



Trinity® Landscape



Trinity® Commercial



EnviroBloxx™

A familiar shot
from our website
that shows all of
our “Living Wall”
products. Each
tile leads to
product focused
pages, packed
with system
information.



EarthBloxx™



ELT Easy Green®



Green Living Fence

More icons from our website that will lead you to complete information on each type of wall system.

Filtrex – GreenLoxx Living Walls

GreenLoxx[®]
L I V I N G W A L L [™] S Y S T E M

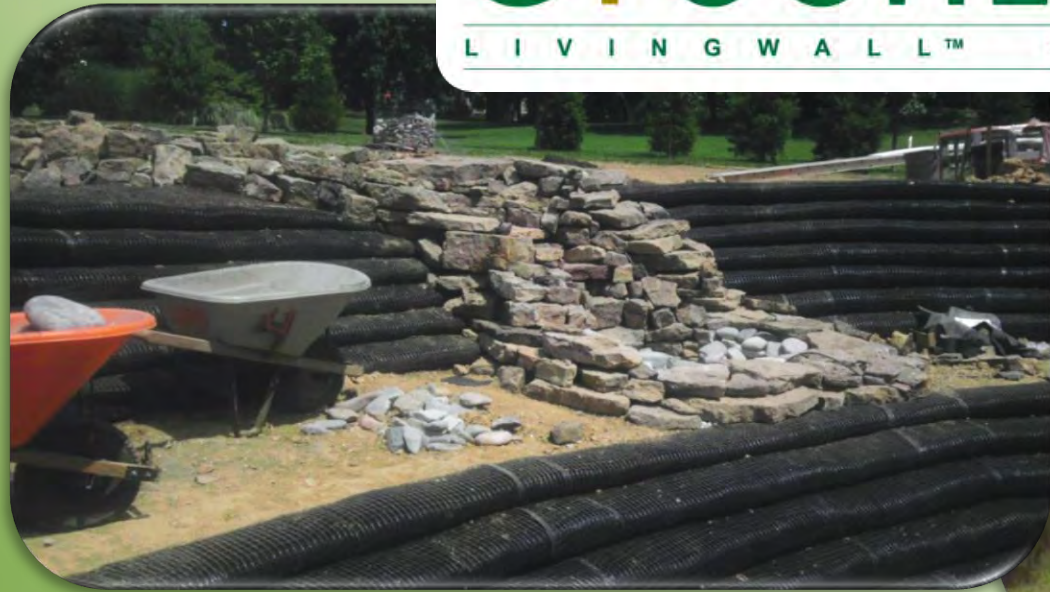


GroSoxx[®]
CUSTOM VEGETATED SOFT BLOCKS[™]

filtrex[®]
LivingWalls[™]

Before and after pictures tell the tale.

Our “soft block” systems function like regular block walls and then they support long-term coverage by healthy plants.



Lots of flexibility to build walls and slopes at a variety of heights – just like block and traditional systems but with the added environmental benefit of plants covering the face long-term.



Irrigation for All of Our Systems

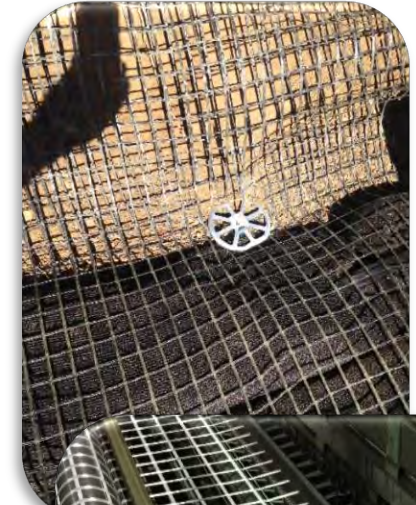
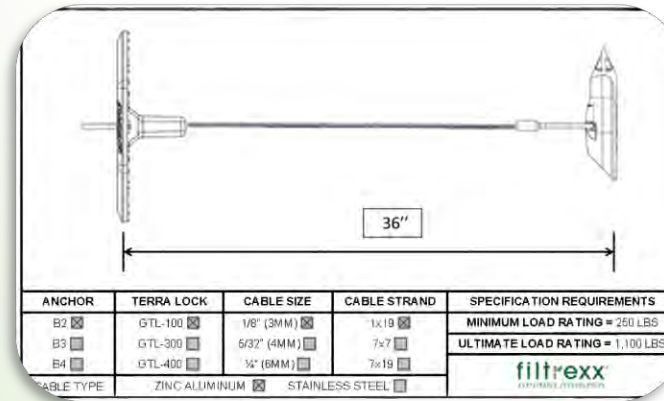


Flat drip tape or round emitter tubing is run under the mesh from one end of our wall systems to the other. Cost effective and functional irrigation ensures good germination and early plant health in order to establish strong root systems for the long term.

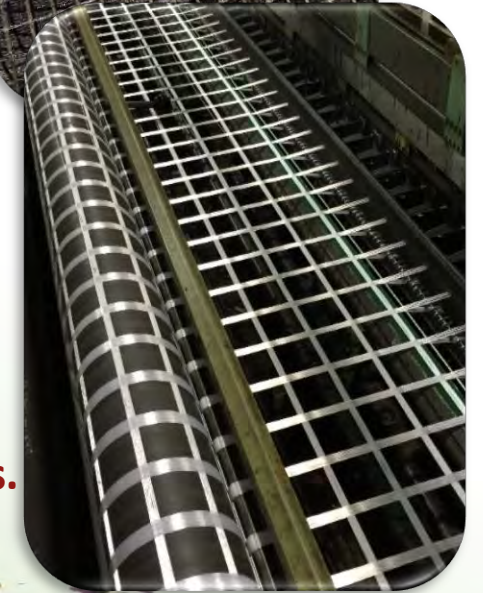


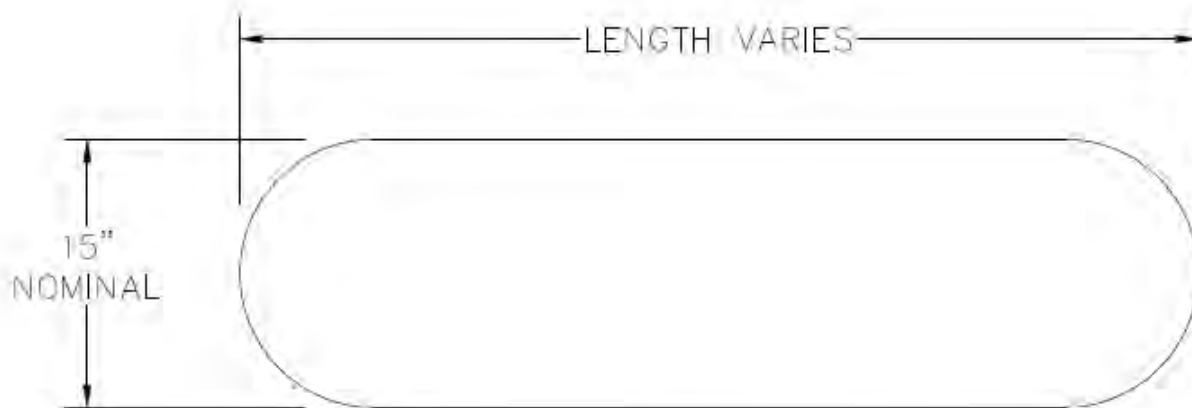
GreenLoxx Non-MSE – Basic Parts

GroSoxx - in several lengths or made continuous from a blower truck. “Cover crop” seed or “permanent crop” seed can be run inside the soxx for ease of placement.

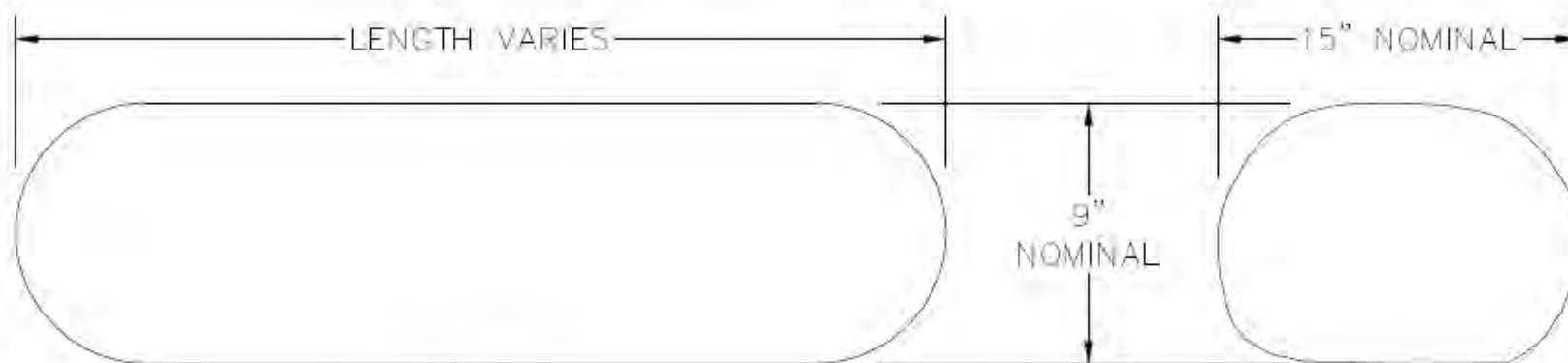


A variety of Soil Anchors, hardware, irrigation tubing and FLW Geogrids for a range of applications.





TOP VIEW



FRONT VIEW

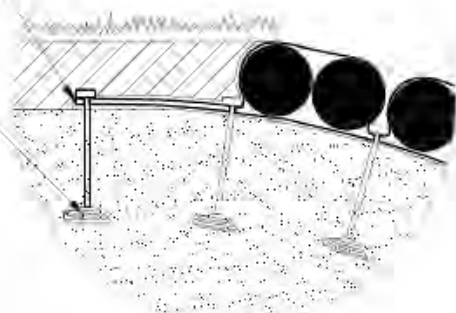
SIDE VIEW



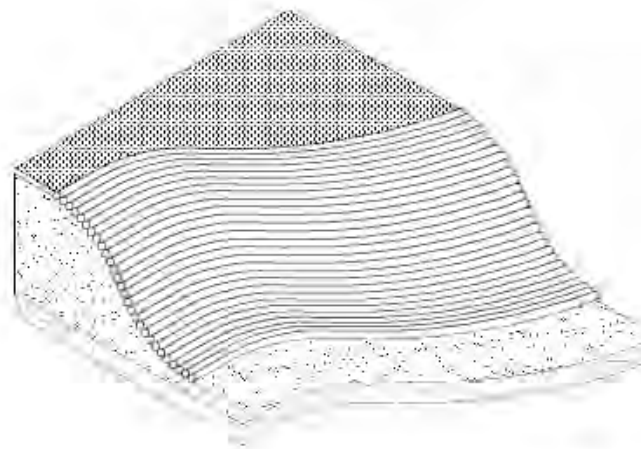
NOTES: GROSOXX ARE 12-INCH DIAMETER TUBES THAT DEFORM TO NOMINALLY 9-INCHES TALL AND 15-INCHES WIDE.

FLW 20 GEOGRID OR
OTHER DESIGN STRENGTH
(FLW 35 OR FLW 55)

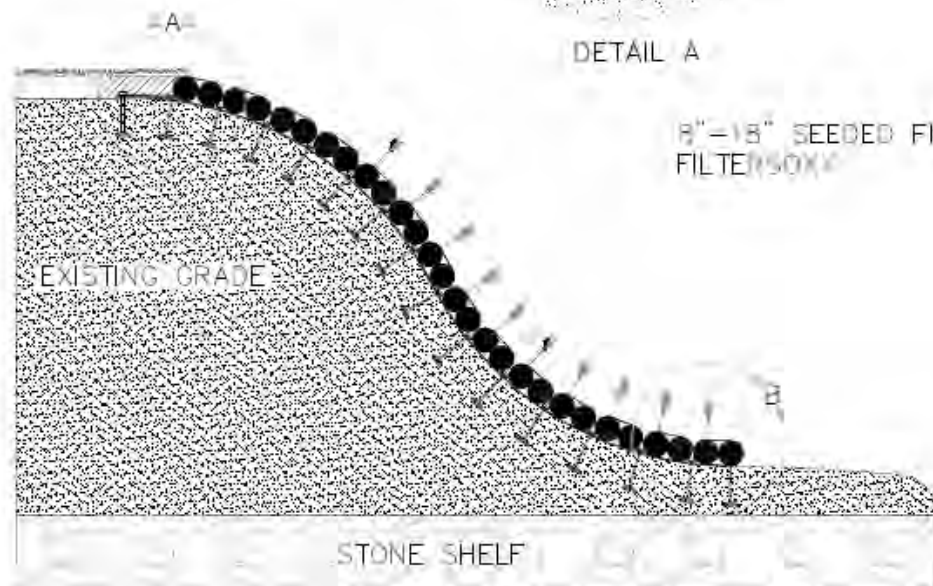
GRIPPLE SOIL ANCHOR
3' MIN DEPTH OR OTHER
ANCHOR STRENGTH AS
PER ENGINEER



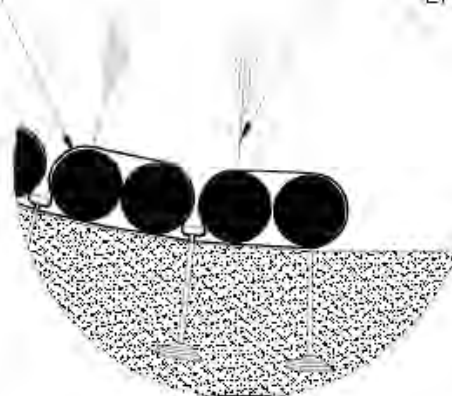
DETAIL A



LIVE WILLOW
STAKES OR
OTHER PLANT
MATERIAL FROM
SEED OR FROM
LIVE PLUGS



8"-18" SEEDED FILTREXX
FILTERSOXX

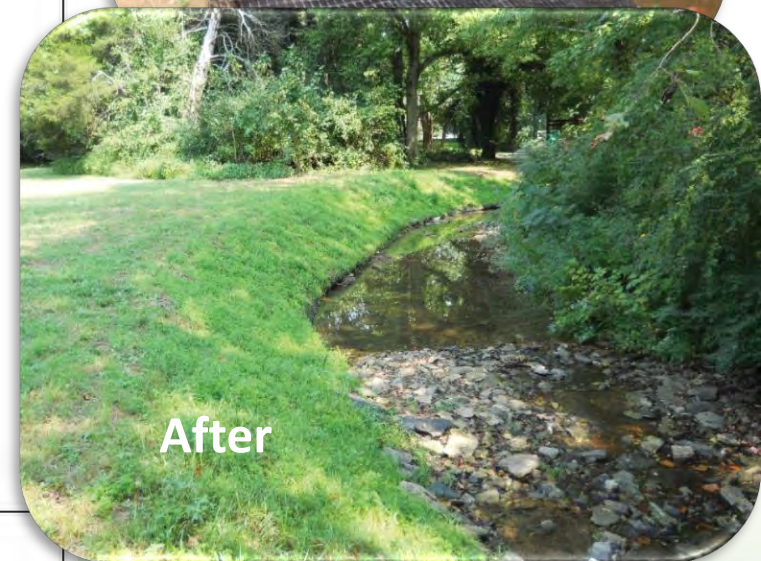


DETAIL B

*NO GRID STRANDS ARE ALLOWED TO BE CUT
IN ORDER TO INSERT PLANTS IN ANY CASE.



Before



After



GreenLoxx[®]
L I V I N G W A L L [™] S Y S T E M



This very degraded urban stream bank was improved without major excavation or clearing.

In Winter, GreenLoxx Non-MSE was installed at a variety of inclinations using pre-seeded GroSoxx. Permanent “native” crop plugs inserted later, in best season for success.





This failing embankment above a native Steelhead stream was improved with some excavation and shaping to achieve a stable condition. GreenLoxx Non-MSE was installed at 60 degrees using un-seeded GroSoxx. Permanent native crop plugs inserted on completion.



More Non-MSE Project Pictures



GreenLoxx MSE – Basic Parts

GroSoxx - in several lengths or made continuous from a blower truck. “Cover crop” seed or “permanent crop” seed can be run inside the soxx for ease of placement.

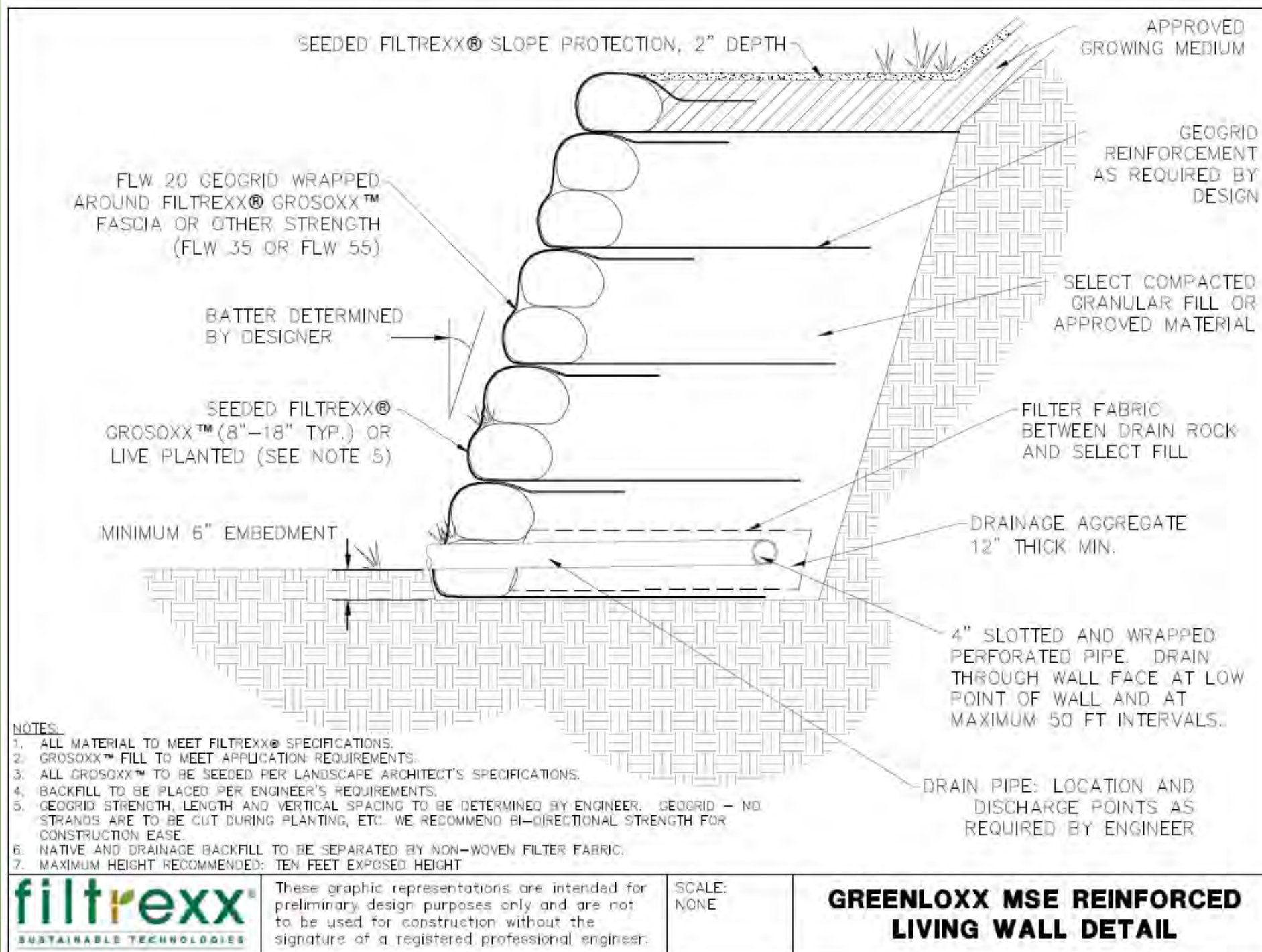


Various strengths of our unique FLW Geogrids and irrigation tubing for a range of applications. Our grids are made with a 2” x 2” inside opening for ease in planting without cutting the strands and weakening the reinforcement. (a must!)

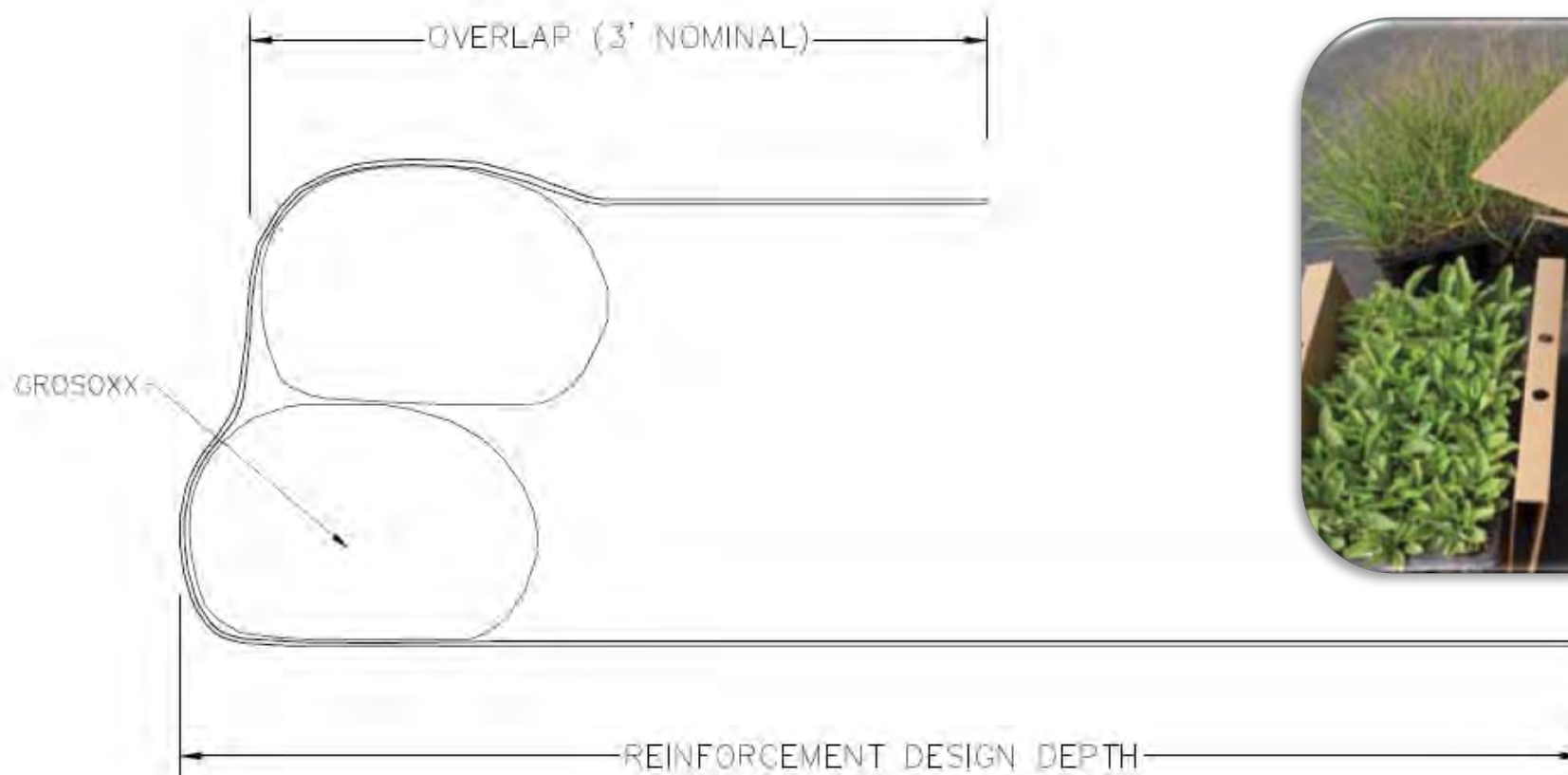


The cross section looks similar to our other systems and to traditional block based systems.

Familiar installation method that contractors can quickly master.



We can deliver plugs or seed to the job.



Our FLW Geogrids can be customized to the job.

Lakefront Residence MSE Version



Plants Make It All Come Together



MSE Walls With All Growing Media At The Face



More MSE Project Pictures



The Most Cost Effective Solution

- Two Styles to suit any project for the best fit with the least excavation.
- Both versions offer 100% Filtrex Certified Growing Media at the face for reliable plant growth and its all nationally available through our extensive distribution network.
- Excellent documentation, engineering and construction assistance to ensure success.
- Built-in erosion control with excellent shear resistance in high flow conditions.
- Complete, well matched material packages down to the last detail.
- Guaranteed volume, placement, quality and containment of “true” growing media that is locally sources compost based.
- Maximum environmental service, green-space, habitat, urban cooling, runoff water retention and treatment, carbon sequestration and the incredible aesthetic appeal of healthy plants covering and minimizing the structure.
- Ask your local representative about pricing for your project or call us to discuss price ranges and get your project started now.





Thank you for attending our
presentation!

www.filtrex.com/livingwalls

